

painting contractor newsletter



Safety Coatings – from Parking Lots to Jersey Barriers

Last month we talked about painting metallic surfaces – a message that is slightly different than our traditional teachings on conventional architectural substrates. This month we continue with a look at a couple of other surfaces that require paint – parking lots and Jersey barriers. It is easy to recognize the importance to paint these surfaces – they significantly improve public safety and reduce chaos. In addition, a quick reflection on the current economic condition and the proposed stimulus package suggests that as the Federal and State Government push infrastructure programs, that opportunities for safety and temporary markings will grow.

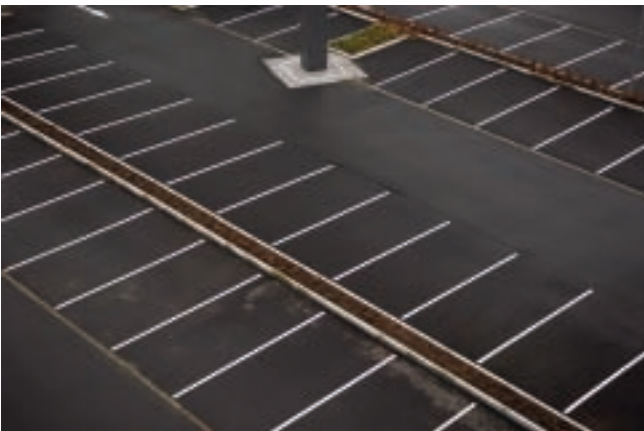
Parking Lot Paint: how might one go about painting a parking lot at a Wal-Mart store? What sort of considerations must be given to equipment and type of paint? Some key things to consider:

Dry Time: Large, busy parking lots are usually painted overnight. As a result, the paints are designed to dry relatively quickly to ensure that the area can be returned to service as quickly as possible.

Durability: Critical features are related to general wear from tires and, in particular, some resistance to hot tire pick-up. And the paints generally exhibit good washout resistance (a combination of good water resistance and adhesion to asphalt or concrete).

Other Attributes: For large jobs, paints are primarily applied with a walk behind spray unit and exhibit excellent film build and good anti-sag properties.

- your business
- prep, prime and paint
- problem solver
- digital color wheel
- cost calculator
- newsletter archives



subscribe

unsubscribe

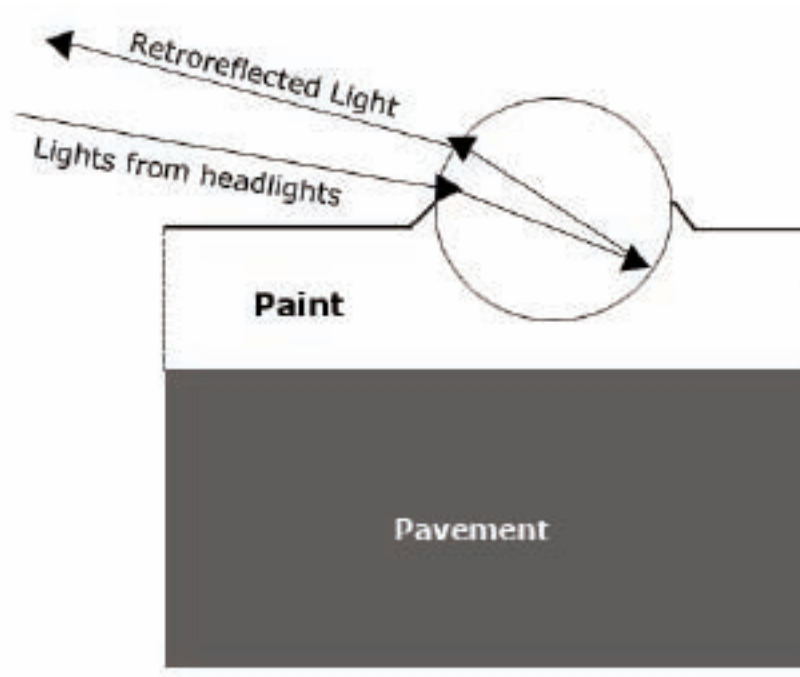
Painting Jersey barriers and guide rails:

Jersey barriers are used to separate and control traffic (automobiles and people). Many choices must be considered when choosing a Jersey barrier. Today we see primarily concrete barriers for traffic control, however for some applications plastic barriers are used as well.



For safety, and especially for night time visibility, these barriers sometimes contain some reflective elements.

Another option is to paint these barriers. Painting helps to preserve the concrete, improve aesthetics, and improve night visibility (when optimized with optical beads). The way to do this is to capitalize on technology used to make traffic paint. As illustrated below, glass beads are embedded into wet paint, resulting in a coating with beads sticking out of the dried film. These beads then reflect light (head lights on automobiles) to make the Jersey barriers highly visible.



To apply these paints effectively a dual spray unit is used – that is, the glass beads are immediately sprayed into the wet paint.

Other barriers that are commonly used to manage traffic can also be painted with reflective elements to enhance safety.

For best results we recommend using a paint optimized to provide good performance over concrete, including bridge-crack resistance, good adhesion and good performance under adverse environmental condition (such as freeze thaw cycling).

A water-based 100% acrylic, EWC (Elastomeric Wall Coatings) has the flexibility and durability and is ideally suited for this opportunity.

